

T H E B E S T



Available in 15, 20, 30, 40, 50, 50-short, 75, 85 and 105 gallon models

BEST CONSTRUCTION

No Rust, No Corrosion — EVER!
Unique 2-ply PermaGuard design: A seamless, blow-molded polybutene inner tank wrapped in a filament-wound fiberglass. Great for 'brutal well water' conditions.

BEST DURABILITY

Toughest and strongest tank in the residential water heater industry. No one comes close. Marathon tanks are regularly tested to withstand 100,000 cycles from zero-to-150 psi. Even 'high-end' steel water heaters struggle to make it 1/4 the way through this punishment.

BEST FUNCTIONALITY

Beauty more than skin deep. No anode rod means no rotten-egg smell from sulfates found in many water systems. Easy-on/easy-off water connections. Self-cleaning action of bowl shaped tank bottom, coupled with a brass drain valve at the very bottom of the tank provides for more complete draining.

HIGH EFFICIENCY

Save on your energy bill. 2.5 inches of Envirofoam® insulation minimizes stand-by heat loss. No 'heat-trap' fittings that can clog or chatter.



*See Warranty Information sheet at your dealer for complete warranty information.

BEST VALUE

Marathon's renowned durability eliminates the cost of buying and the cost of re-installing a new water heater every 10-years (national average). This coupled with energy savings makes the total cost of ownership lower than typical water heaters.

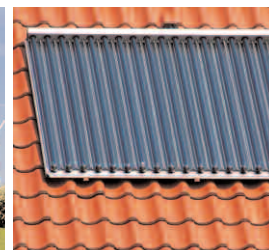
BEST WARRANTY

Lifetime tank warranty* - The last water heater you will need to buy for your home. If tank fails you get a new Marathon with no 'pro-rating' deductions. Selling your home, making a warranty claim, use in multi-family, commercial/industrial/agricultural or high-temperature applications does not void warranty (see back for more details).



"GREEN POWER" READY

Ready to use for 'thermal storage' with geo-thermal heat pumps, solar and 'Green/Renewable Energy.' Conduit between control boxes facilitates wiring for 'Off-Peak' and special controls.



CONSTRUCTION FEATURES

- **Energy Saving Pipe Wrap Kit** - reduces heat loss through plumbing lines.
- **Temperature and Pressure Relief Valve** - factory installed.
- **Watertight Grommets** - keep out overhead moisture and condensation.
- **Seamless Molded Non-metallic Inner Tank** - can't rust or corrode.
- **Fill (Dip) Tube** - high temperature polysulfone withstands thermal storage and high temperature commercial applications.
- **High-tech Heating Elements** - upper element with built-in fuse protects tank against "dry fire." Bottom element is long-life low-watt density, stainless alloy.
- **Polyethylene Outer Jacket** - 'car bumper tough' to resist dents and scratches during transit, installation and beyond.
- **Envirofoam®** - a great energy saver and friendly to the ozone layer—it's made without CFCs and HCFCs.
- **Filament-wound Fiberglass Tank** - has unmatched strength.
- **Recessed Drain Valve** - out of the way of brooms, feet and ankles.



LIFETIME TANK WARRANTY*

Privately owned, single family dwellings: The tank is warranted not to leak: "for as long as you own your home." If the home is sold, the warranty reverts to 15 years from the date of manufacture. Parts are warranted for 6 years from the date of manufacture.

Commercial Use: If the heater is used in applications such as apartments, office restrooms, or for agricultural use, the tank is warranted for 10 years from the date of installation. Parts are warranted for 5 years in these applications (3 years in dairy barns).

Industrial Use: If the heated water produced by this unit is used in any commercial process, I.E., cleaning parts, agricultural produce or a component part of a product, the tank is warranted for 5 years from the date of installation. Parts: 1 year

*See warranty information sheet for complete warranty information.

Point-of-Use Single Element Models

Model	Gallon Capacity	Element Wattage	Recovery @90°F Gal/Hr	Voltage	Nominal Dimensions			Shipping Weight	Shipping Carton
					A	B	C		
MR15120	15	2000	9.1	120 volt	21.62"	31.62"	35.62"	58 lbs.	22 X 22 X 37
MR20120	20	2000	9.1	120 volt	23.50"	30.50"	34.50"	61 lbs.	23.75 X 23.75 X 36
MR20230	20	3000	13.6	240 volt	23.50"	30.50"	34.50"	61 lbs.	23.75 X 23.75 X 36

Note: First hour ratings and energy factors are not performance measurements on water heaters of 20 gallons or less.

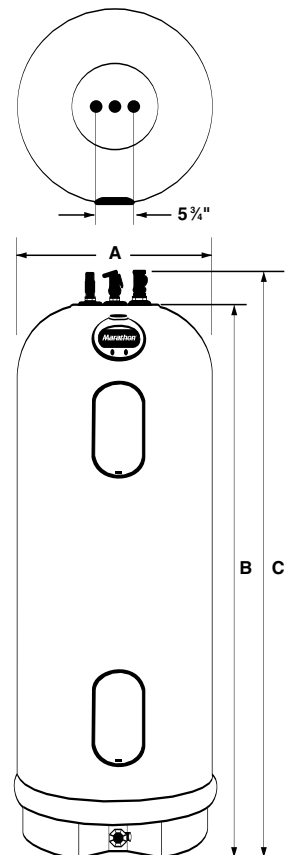
Standard Dual Element Models

Model	Gallon Capacity	Element Wattage	Recovery @90°F Gal/Hr	First Hour Rating	Energy Factor	Nominal Dimensions			Shipping Weight	Shipping Carton
						A	B	C		
MR30238	30	3800/3800	17.3	39 gal.	.94	21.62"	49.00"	53.00"	75 lbs.	22 X 22 X 54.5
MR30245	30	4500/4500	20.0	42 gal.	.94	21.62"	49.00"	53.00"	75 lbs.	22 X 22 X 54.5
MR40238	40	3800/3800	17.3	48 gal.	.94	21.62"	61.50"	65.50"	90 lbs.	22 X 22 X 67
MR40245	40	4500/4500	20.0	52 gal.	.94	21.62"	61.50"	65.50"	90 lbs.	22 X 22 X 67
MR50238	50	3800/3800	17.3	58 gal.	.94	23.50"	62.75"	66.75"	100 lbs.	23.75 X 23.75 X 68
MR50245	50	4500/4500	20.0	61 gal.	.94	23.50"	62.75"	66.75"	100 lbs.	23.75 X 23.75 X 68
MSR50238	50	3800/3800	17.3	51 gal.	.90	28.25"	43.25"	47.25"	95 lbs.	28.25 X 28.25 X 49
MSR50245	50	4500/4500	20.0	54 gal.	.90	28.25"	43.25"	47.25"	95 lbs.	28.25 X 28.25 X 49
MR75238	75	3800/3800	17.3	75 gal.	.92	28.25"	58.62"	62.62"	122 lbs.	28.25 X 28.25 X 64.25
MR75245	75	4500/4500	20.0	78 gal.	.92	28.25"	58.62"	62.62"	122 lbs.	28.25 X 28.25 X 64.25
MR85230	85	3000/3000	13.6	84 gal.	.92	28.25"	66.25"	70.25"	134 lbs.	28.25 X 28.25 X 72
MR85238	85	3800/3800	17.3	87 gal.	.92	28.25"	66.25"	70.25"	134 lbs.	28.25 X 28.25 X 72
MR85245	85	4500/4500	20.0	91 gal.	.92	28.25"	66.25"	70.25"	134 lbs.	28.25 X 28.25 X 72
MR105238	105	3800/3800	17.3	101 gal.	.91	30.25"	66.75"	70.75"	152 lbs.	30.25 X 30.25 X 72.5
MR105245	105	4500/4500	20.0	104 gal.	.91	30.25"	66.75"	70.75"	152 lbs.	30.25 X 30.25 X 72.5

Notes: 240 Volt AC single phase, standard 3/4" N.P.T. inlets and outlets

Maximum test pressure: 300 PSI
Maximum working pressure: 150 PSI

*In keeping with our policy of continuous progress and product improvement, we reserve the right to make changes without notice."



Made In USA.

Marathon is a registered trademark of Water Heater Innovations, Inc.

Marathon
WATER HEATERS

Marathon Water Heaters
3107 Sibley Memorial Highway
Eagan, MN 55121
1-800-321-6718

www.marathonheaters.com

A **Rheem** Company

P/N 231770 01/08
Copyright 2003 Water Heater Innovations, Inc.